

# LUXURY HOME<sup>®</sup>

M A G A Z I N E

THE PALM BEACHES & SURROUNDING AREAS

ISSUE 5.2



[LUXURYHOMEMAGAZINE.COM](http://LUXURYHOMEMAGAZINE.COM)

Jupiter Island Ocean to Intracoastal Estate, Presented by  
Andrew & Milla Russo, Illustrated Properties | Pgs. 66-69

# Elevating A St. Regis Residence in Rye, NY

*Photography by Jane Beiles*



**T**he Lewis Design Group's clients had relocated to Florida as full-time residents, yet wanted to maintain a part time presence in Westchester. They desired a turnkey lifestyle with luxury amenities, as they spent the majority of their time in Florida. The new St. Regis Residences in Rye were the perfect fit.

They purchased while the project was under construction during Covid lockdown, and there were no models available for any of the units, so they worked off a floorplan to fully design the space.





Barbara Lewis, principal of the The Lewis Design Group, recommends decorating condominiums and apartments in less color and more neutrals, utilizing more textures and tones to enhance elegance and create spaciousness. In this building, the architectural style is a modern take on country from the outside. The client wanted a more contemporary/transitional look, so the apartment needed to be sleek and sophisticated, a bit monochromatic, with a contemporary “classic yet current” style. They decided on a predominately neutral pallet with pops of soft color. The open floor pan was a key indicator to use similar colors throughout.

The next part of the design and décor process was determining which pieces from the Scarsdale home would be a part of the new residence. Then began the hunt of finding some vintage and unique pieces to mix in with what had been ordered. They found the dining room table base, suede living room chairs, and a beautiful lacquer credenza from the 60's. These three pieces set the tone for the design direction they would take, providing a nice contrast to the Nierman Weeks Demilune the client kept from their Scarsdale home.

Construction was delayed due to Covid and supply chain issues, and it took a year and a half longer to complete. Fortunately, because of the construction delays, all items initially ordered were ready for delivery upon move in.

*“Utilize more textures and tones to enhance elegance and create spaciousness.”*

**BARBARA LEWIS**



The dining table has one of Lewis' signature designs, a custom made two-person banquette at each end of the table. Barbara shares, "We were fortunate to find the mid-'60's Brutist style dining table base and vintage suede living room chairs from the same period. The beautiful suede on the chairs further solidified the decision for a neutral palette." The dining room art piece was commissioned from a gallery in Greenwich, the subject resonating with the wife and her love of ballerinas. The dining room chandelier from Curry & Company, "Forest Light," debuted at High Point and has rock crystal as one of its elements.



The demilune by Niermann Weeks was brought from the client's Scarsdale home, and the lamps are Murano glass from Avery & Dash in Stamford, CT. The clear glass allows the sightline to remain open and not block or fight with the artwork.

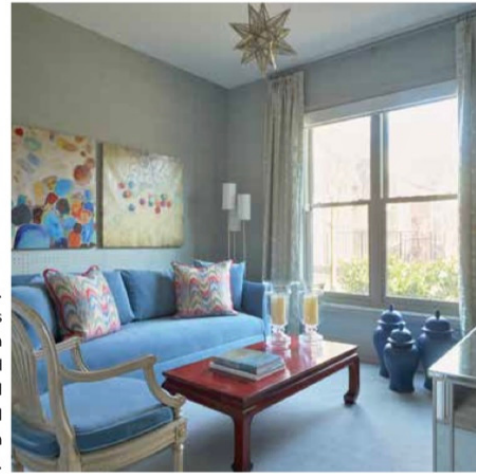
The two chairs are vintage from a dealer in the Hamptons, from the 60s Brutus period. They were quite the find, perfectly upholstered in gorgeous suede and kept as they are. The brass legs work very well with the dining room chandelier.

The rugs are 100% wool, tone on tone leopard, with the raised spots providing a three-dimensional contrast. They add panache and style, while remaining subtle elegant.



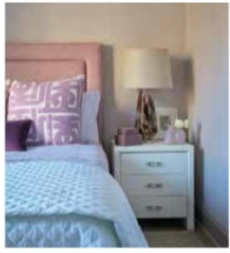


The inspiration for the Primary Bedroom came from a Phillip Jeffries Mural. Given the location of the Primary Suite and the layout, it allowed us to leave the door open, yet you don't see the bedroom. The colors in the mural work perfectly with the living room and dining room, allowing for a pleasing continuity.



In the den, the vintage Mrs. McDougal coffee table works perfectly with the artwork from the client's Scarsdale home and the Vanguard sleeper sofa. All lighting in the den is by Visual Comfort. Artwork was also from client's Scarsdale home.

The location of the Guest Bedroom allowed for something a bit different, but yet on the same side of the color wheel. The Peter Faisano fabric has been a great hit with the client's grandchildren, as well as providing enough sophistication for the adult guests when balanced with the Arte Grasscloth on the walls.



## DESIGN RESOURCES

### LIVING ROOM / DINING ROOM

- Draperies fabric: Holland and Sherry, Trim: Samuel and Sons
- Sofa fabric: Pierre Frey Mohair Velvet, Sofa: Vanguard
- Swivel Chair fabric: Cowtan and Tout
- Throw Pillows: Barbara Barry for Kravet, tape on solid pillows: Cowtan and Tout
- Vanguard Dining Chairs: Jim Thompson fabric
- Dining Table and Suede Chairs, Bar Cart and Credenza: Vintage
- Demilune: Neirman Weeks
- Ceiling wallpaper: Phillip Jefferies
- Coffee Table: Baker
- Floorlamp: Visual Comfort "Hargate"
- Rugs: Country Carpet in Syosset.

### DEN

- Vanguard Sofa: Mohair Velvet Schumacher
- Wallpaper: Phillip Jefferies "Rivets"
- Drapery fabric: Cowtan and Tout
- Coffee Table: Vintage Mrs. Mac Dougall
- Throw pillow fabric: Lee Jofa
- Lighting: Visual Comfort

### PRIMARY BEDROOM

- Bedroom furniture: Mary Mac Donald for Chaddock "Interlude"
- Chaise fabric: Manuel Canovas
- Drapery fabric: Lee Jofa
- Wallpaper: Phillip Jefferies "Blossom"

### GUEST BEDROOM

- All fabrics: Peter Faisano
- Wallpaper: Arte

Barbara Lewis, Principal and Owner of The Lewis Design Group has more than 25 years of interior design experience and is critically acclaimed for a classic yet current style that has been featured at many show houses, including the 2022 Kips Bay Decorator Show House Palm Beach. The Lewis Design Group offers a boutique, full-service client approach. In close collaboration with the client, Barbara Lewis is able to define the style of her client's vision, whether it be classical, transitional, or Grand Millennial. The Lewis Design Group has appeared in numerous publications including Veranda, Elle Décor, Architectural Digest and House Beautiful, as well as profiles by brands such as Sotheby's. Barbara Lewis has designed private residences from Manhattan to Laguna Beach and has design studios in Glen Cove, New York, Wilton, Connecticut, and Juno Beach, Florida.

